

HUNTERS®

HERE TO GET *you* THERE



The Winding

Stourbridge, DY8 4FF

£380,000



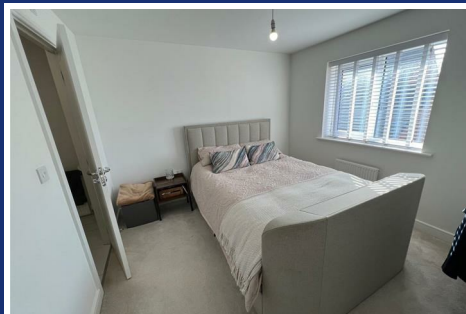
Council Tax: E



5 The Winding

Stourbridge, DY8 4FF

£380,000



Front Of The Property

With a tandem driveway leading to garage, path to the front door and EV charging point.

Entrance Hall

With a double glazed door to front, built in storage cupboard, under stairs storage cupboard, doors to rooms, tiled floor and a central heating radiator.

Lounge

15'3" x 11'5" (4.67 x 3.50)

With a door from the entrance hall, double glazed window to front, feature electric fire, media wall and a central heating radiator.

Cloakroom

With a door from the entrance hall, WC, wash hand basin, tiled splashback, extractor fan and a central heating radiator.

Kitchen Dining Room

9'8" x 18'8" (2.97 x 5.71)

With a door from the entrance hall, fitted with a range of wall and base units, work surfaces with matching splashback, sink and drainer, integrated double oven, gas hob, integrated fridge freezer, dishwasher and washing machine, cupboard housing wall mounted boiler, dining area with double glazed french doors to rear, double glazed window to rear and a central heating radiator.

Landing

With stairs from the entrance hall, loft access, doors to rooms and a central heating radiator.

Bedroom One

10'4" x 11'2" (3.16 x 3.42)

With a door from the landing and one to the en suite, double glazed window to front and a central heating radiator.

En Suite

With a door from bedroom one, shower cubicle, WC, wash hand basin, part tiled walls, tiled floor, extractor fan and a central heating radiator.

Bedroom Two

9'3" x 10'7" (2.82 x 3.23)

With a door from the landing, double glazed window to front and a central heating radiator.

Bedroom Three

11'10" x 7'10" (3.61 x 2.40)

With a door from the landing, double glazed window to front, built in storage cupboard and a central heating radiator.

Bedroom Four

12'9" x 7'3" (3.91 x 2.23)

With a door from the landing, double glazed window to rear and a built in wardrobe.

Bathroom

With a door from the landing, bath with shower over, fitted glass shower screen, WC, wash hand basin, part tiled walls, tiled floor, extractor fan and a central heating radiator.

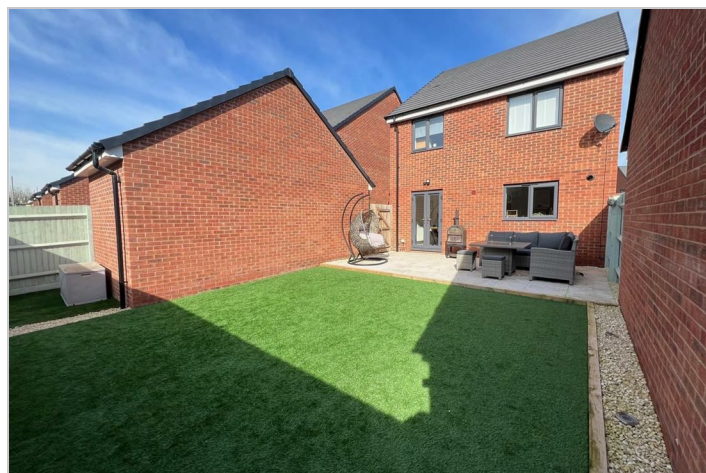
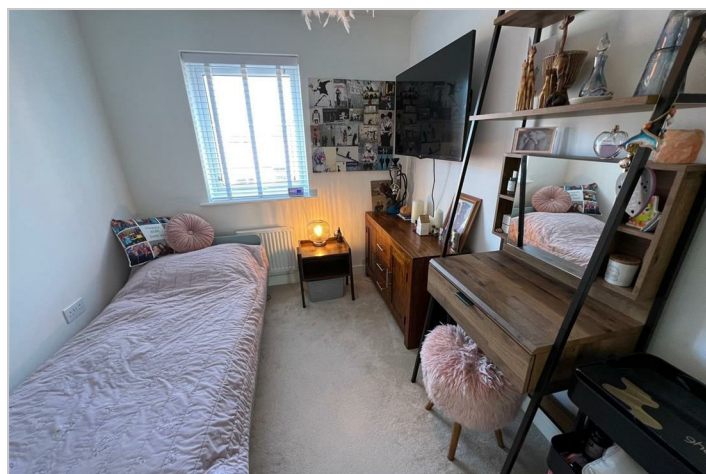
Garage

20'3" x 9'10" (6.19 x 3)

With a garage door to front, power and light.

Garden

With double glazed french doors from the kitchen to a large patio leading to artificial lawn, outdoor lighting, outside tap, and gate to driveway.



Road Map



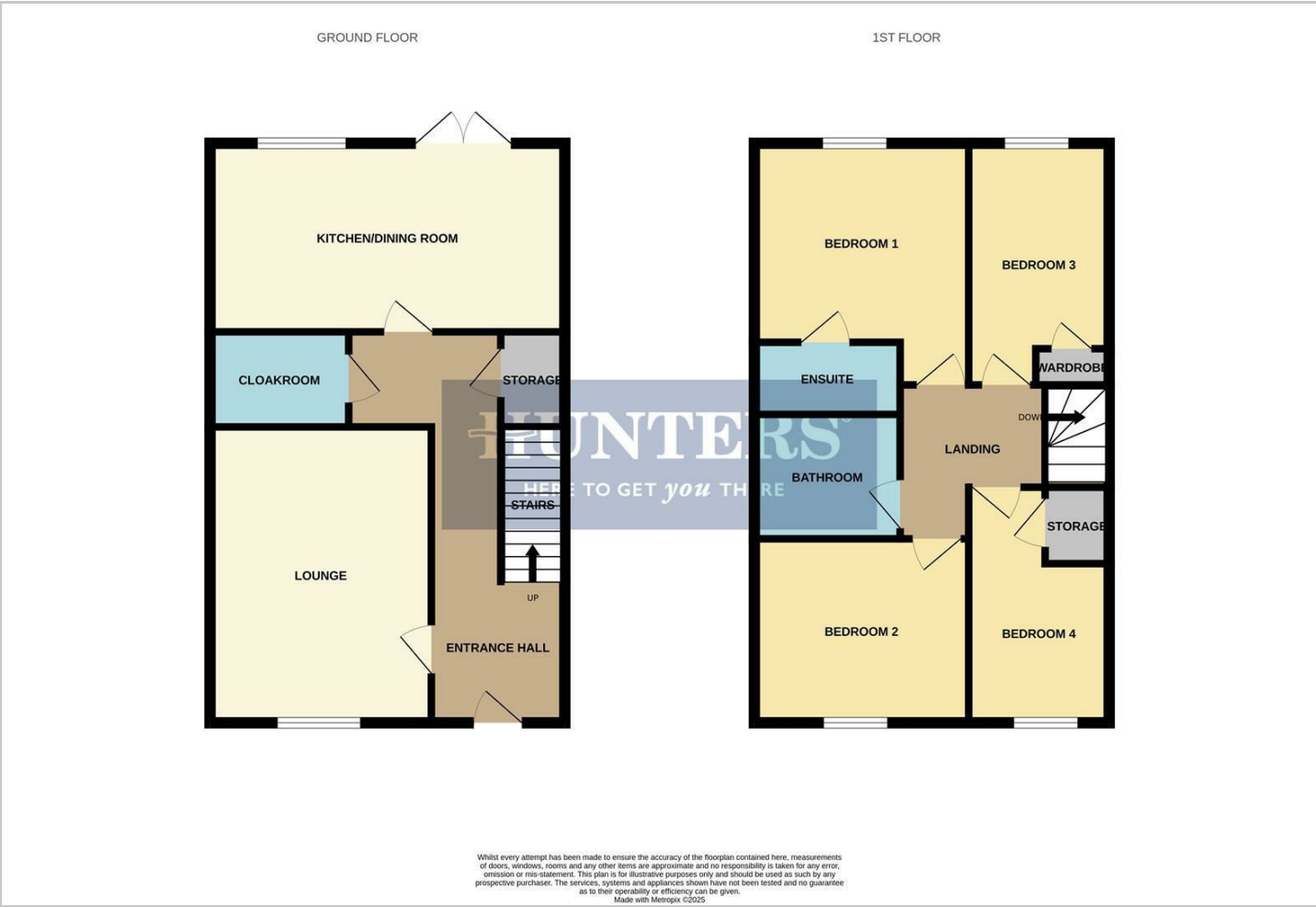
Hybrid Map



Terrain Map



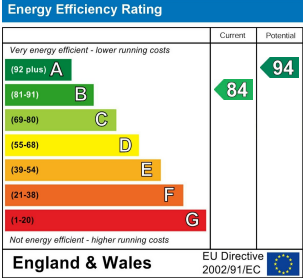
Floor Plan



Viewing

Please contact our Hunters Stourbridge Office on 01384 443331 if you wish to arrange a viewing appointment for this property or require further information.

Energy Efficiency Graph



These particulars are intended to give a fair and reliable description of the property but no responsibility for any inaccuracy or error can be accepted and do not constitute an offer or contract. We have not tested any services or appliances (including central heating if fitted) referred to in these particulars and the purchasers are advised to satisfy themselves as to the working order and condition. If a property is unoccupied at any time there may be reconnection charges for any switched off/disconnected or drained services or appliances - All measurements are approximate. **THINKING OF SELLING?** If you are thinking of selling your home or just curious to discover the value of your property, Hunters would be pleased to provide free, no obligation sales and marketing advice. Even if your home is outside the area covered by our local offices we can arrange a Market Appraisal through our national network of Hunters estate agents.